

HOUSING

Students who select our housing services will be immersed in the vibrant city of Florence, in unique locations within walking distance or a short bus/tram ride from the campus facilities. Our housing options are designed to introduce students to the dynamic urban life of Florence offering easy access to its diverse districts. Unlike other cities with mostly residential areas, Florentines commonly get around on foot between neighborhoods, making walking a key part of daily life and an integral aspect of the city's charm.

HOUSING OPTIONS

FAMILY HOMESTAY

SHARED APARTMENT



FAMILY HOMESTAY: LA FAMIGLIA ITALIANA

LIVE LIKE A LOCAL IN FLORENCE!

Experience authentic Italian culture by living with a local host family while studying with us.

Our homestay accommodation offers students a unique opportunity to immerse themselves in Italian daily life, improve their language skills, and enjoy the warmth of a home-away-from-home.

Living with a host family means embracing a new cultural experience and adapting to different routines.

While meals (Monday through Thursday) and laundry services are provided, students are responsible for their own room maintenance and should be mindful of shared spaces. This experience offers a unique chance to build meaningful and lasting relationships.



WHY CHOOSE A HOMESTAY?

- *Cultural Immersion: Engage in Italian traditions, cuisine, and lifestyle firsthand*
- *Language Practice: Learn some Italian skills through daily interactions*
- *Comfort & Convenience: Enjoy a welcoming home with all the essentials for a comfortable stay*
- *Authentic Home-Cooked Meals: Breakfast and dinner included, prepared with fresh, local ingredients (Monday through Thursday)*
- *Supportive Environment: Be part of a caring family that can offer guidance and local insights*

LAYOUTS AND STANDARDS

The standard layout of our home stay accommodations consists of:

- **private or shared bedroom**
- **shared bathroom(s)**
- **kitchen area**
- **living / dining room space**

Each bedroom offers sufficient storage space to accommodate a reasonable amount of clothing and luggage.



WHAT'S INCLUDED

- *Daily breakfast and dinner from Monday to Thursday (meals are on your own Friday through Sunday)*
- *Access to common areas (living room, kitchen, etc.)*
- *Weekly laundry service (one laundry per week, detergent provided)*
- *Bed towels and linens changed once a week*
- *Wi-Fi connection*
- *Kitchen Refrigerator*
- *Safe and comfortable home environment*
- *Privacy guarantee: the host family cannot enter the room unless agreed upon or in case of emergencies*

UTILITIES

A utility budget is included in the housing cost for gas, water, and electricity.

USAGE:

- *A general recommendation is to keep utilities switched off when not in use, and to be mindful of the power levels that may not always accommodate all appliances at once.*
- *General note on electricity: The typical kilowatt level is 3kW for domestic usage in Italian homes.*
This level is sufficient to utilize multiple appliances simultaneously, however keeping all electric appliances on at the same time may cause temporary power outages.
- *AC: In the EU, air conditioning is utilized primarily to dehumidify air. As such, while AC units will lower the overall room environment, extremely cool temperatures should not be expected.*
- *Heating: Due to legal and environmental regulations on heating during the winter, room temperature in apartments does not exceed 20°C (68°F.) This applies to the period from November to the middle of April. During the rest of the year heating is not available.*
- *Wi-fi is also included, as indicated in the accommodation standards.*

EXPECTATIONS, AND ETIQUETTE

Choosing our homestay accommodations offers our students a unique, immersive experience, rediscovering a family environment away from home.

WHAT TO EXPECT

MANAGING EXPECTATIONS:

- Home stay accommodation may have different layouts especially in historic buildings
- You may choose to stay in a single or shared bedroom
- Interaction levels may differ: some families are very involved and will invite you to activities, while others may give you more independence
- Heating is not available in non-winter months due to legal and environmental regulations*

*The "Utilities" section provides further details on gas and energy usage.

CONDUCT AND ETIQUETTE

- **Be Respectful** – No curfew set, but keep the noise to a minimum if returning late and during quiet hours. Interact with the family while respecting privacy and shared areas. Greet everyone politely, using formal language like Buongiorno (Good morning) or Buonasera (Good evening), especially when meeting older family members.
- **Offer Help** - Offer to help with setting the table, cleaning up, or assisting in the kitchen when possible. It shows gratitude and respect for their hospitality.
- **Punctuality** - Italians tend to value punctuality, but don't worry if meals start a little later than expected. It's always a good idea to let them know if you'll be late. No overnight guests are allowed after 11 pm; guests are allowed during the day but must inform the family in advance.
- **Mealtime Etiquette** – If possible join meals if you're at home during meal times. Wait for everyone to sit down before starting to eat, and remember that Italians typically take their time with meals, enjoying conversation. No independent kitchen use. Warn in advance if you are not going to be there during meal times.
- **Keep the House Tidy** - Keep your personal space clean and respect shared areas. Students are responsible for cleaning their own room.

BENEFITS OF LIVING IN A HOME STAY FAMILY

LIVING IN A HOMESTAY ACCOMMODATION ALLOWS STUDENTS TO:

- **Feel at Home in a New Country** – Have a supportive environment while adjusting to life in Florence
- **Experience Authentic Italian Culture** – Immerse in daily traditions, customs, and lifestyle
- **Practice the Language** – Improve Italian skills through everyday conversations
- **Enjoy Home-Cooked Meals** – Taste authentic regional cuisine prepared by locals

HOME STAY LIVING LIVING HELPS STUDENTS TO GAIN:

- **Personal Connections:** building lasting friendships with your host family and gain insights into their way of life, creating bonds that often extend beyond the stay
- **Local Insights:** Benefit from your host family's knowledge of the best local spots, hidden gems, and tips on navigating the area that might not be found in guidebooks
- **Show Interest in Their Culture** – Ask questions about their traditions, food, and daily life. Italians love to share their culture with others, and showing interest will help strengthen your bond.
- **Politeness Goes a Long Way** – Saying "please" (per favore) and "thank you" (grazie) is always appreciated.

WHO CAN APPLY?

Our homestay option is available to all our students who are looking for an immersive cultural experience during their studies.

HOW TO APPLY?

1. **Submit Your Application:** Select "Homestay" as your choice when completing your housing request.
2. **Match with a Family:** We carefully match students with host families based on preferences and availability.
3. **Prepare for Your Stay:** Receive details about your host family and get ready for a memorable experience!

HEAR FROM OUR STUDENTS!

"Living with an Italian family made my time in Florence unforgettable. I learned so much about the culture and felt truly at home!"
Maria, USA



"The home-cooked meals were amazing, and my host family helped me practice my Italian every day!"
Liam, Australia

ROOM TYPE OPTIONS

PLEASE NOTE FOR ALL OPTIONS:

Room types available upon request according to availability.

Rooms may vary in size, depending on the apartment layout.

	OCCUPANCY	BATHROOM	LAYOUT *	EXTRA COST
SINGLE ROOM	1 STUDENT	SHARED BATHROOM Use of shared bathrooms in the apartment unit		YES
DOUBLE ROOM	2 STUDENTS	SHARED BATHROOM Use of shared bathrooms in the apartment unit		NO

* Please note that this is only an example of the layout.

SHARED APARTMENT

LIVE LIKE A LOCAL IN FLORENCE!

Apartments in Florence generally adhere to similar standards and offer comparable facilities. However, due to the city's historical nature, no two apartments are exactly alike. Florence's urban development spans several centuries, with neighborhoods showcasing a mix of architectural styles. Buildings may range from Renaissance-era structures to more modern designs from the 19th century onward.

The outer rings of the city, further from the historic core, tend to feature a higher concentration of modern buildings with standardized layouts. In contrast, neighborhoods closer to the ancient Roman nucleus are more varied in terms of building age and apartment

layouts. This pattern is typical of many cities in Italy and across Europe. The following section on expectations will delve into additional factors influencing living conditions in Italian cities.

Each apartment is walking distance from the main attractions of Florence and from the campus facilities. Walking times may vary depending on an individual's pace, compared to the estimated time provided by a navigation system (maximum 40 minutes on foot). Public transportation options, including buses and trams, serve the entire Florentine municipality and beyond. These modes of transport are commonly used by residents of all ages and backgrounds on a daily basis.

WHY CHOOSE A SHARED APARTMENT?

- **Foster independence:** set your own schedule and lifestyle
- **Self-catering:** you will be responsible for cooking and grocery
- **Comfort & Convenience:** enjoy a fully furnished apartment with all the essentials for a comfortable stay.
- **Social life:** learn to live with others. It is easier to meet and hang out with fellow students.



LAYOUTS AND STANDARDS

The standard layout of the apartments consists of **multiple bedrooms**, **multiple bathrooms** (the number may vary), and a **kitchen/living/dining room** space.

The bedrooms range from **single bedrooms** for one occupant (limited availability) to **multiple occupancy** (double, triple, multiple.) There is sufficient storage space to accommodate a reasonable amount of clothing and luggage.

Apartments may accommodate different numbers of students depending on the size and number of rooms in the floor layout. Students in any housing option will be **sharing the accommodation with other students** who are currently enrolled in our programs.



BASIC EQUIPMENT

- Shared bathrooms (one every 4 students)
- Fully equipped kitchen: Flatware, dinnerware, glasses, mugs, pots and pans, basic kitchen utensils
- Main electrical appliances: fridge-freezer, washing machine, oven or microwave
- Air conditioning (see "Utilities" section)
- Heating (see "Utilities" section)
- Internet access (see "Utilities" section)
Please note that wi-fi access is also
- included for all students at campus locations during opening hours
- Two full sets of bed linens, plus a blanket/comforter
- Basic towel set
- A basic "set" for cleaning: broom, mop, dust pan. The set does not include detergent and cleaning supplies (which are to be purchased by apartment occupants)
- Drying rack for clothes
- Iron and ironing board
- Toilet roll (Only supplied for arrivals, for the remaining time students must resupply on their own)
- All apartments are NON-SMOKING and PET-FREE.
- Pest control / fumigation: All student housing is pre-certified as bedbug-free by a qualified professional pest control company

UTILITIES

INCLUSIONS:

- A utility budget is included in the housing cost for gas, water, and electricity. Utility consumption exceeding the standard monthly amount will be charged separately depending on the level of usage.
- Partial meal plan included in the housing package (5 units per week).

USAGE:

- A general recommendation is to keep utilities switched off when not in use, and to be mindful of the power levels that may not always accommodate all appliances at once.
- General note on electricity: The typical kilowatt level is 3kW for domestic usage in Italian homes. This level is sufficient to utilize

multiple appliances simultaneously, however keeping all electric appliances on at the same time may cause temporary power outages.

- AC: In the EU, air conditioning is utilized primarily to dehumidify air. As such, while AC units will lower the overall room environment, extremely cool temperatures should not be expected.
- Heating: Due to legal and environmental regulations on heating during the winter, room temperature in apartments does not exceed 20°C (68°F.) This applies to the period from November to the middle of April. During the rest of the year heating is not available.
- Wi-fi is also included, as indicated in the apartment standards. The campus Housing Office is not responsible for connection quality, as it depends on the internet provider and building architecture.

EXPECTATIONS, AND ETIQUETTE

While apartment living fosters independence and is associated with related responsibilities in terms of lifestyle, routine, and co-habitation with peers, **institutional housing always includes a network of support services** monitored by qualified campus personnel. Such services include: a housing maintenance ticket system for troubleshooting, a **24/7 emergency line for urgent scenarios**, and a **partial meal plan (5 units per week)**.

WHAT TO EXPECT

THERE ARE A FEW LIVING FACTORS IN ITALY THAT WILL REQUIRE SPECIAL ATTENTION. EXAMPLES INCLUDE:

- Apartments may have different layouts especially in historic building where no two layouts and/or rooming configurations are the same
- Several historic palaces have thick walls, which may slow down internet speed/connection*
- Elevators are not guaranteed in every building due to their historical landmark status
- Clothes dryers are not included in apartments, as they are uncommon in Italy. Drying racks are always provided
- Heating is not available in non-winter months due to legal and environmental regulations*

*The "Utilities" section provides further details gas and energy usage

CONDUCT AND ETIQUETTE

- Managing cohabitation with other roommates, maintaining mutual respect and a pleasant and harmonious stay.
- Student tenants must follow Italian, Tuscan regional, and Florence city laws, along with specific building rules during their study period.
- Respect neighbors and Florence's noise regulations during evening hours for public peace and quiet.
- All apartments will be cleaned and inspected prior to move-in dates, after which students are responsible for daily/weekly cleaning.
- A complete guideline of conduct and housing- specific regulations is provided in the housing policy signed by students upon check-in.
- Comply with city regulations regarding waste disposal (dedicated bins, recycling procedure, specific collection day and hours).

WHO CAN APPLY?

Our shared apartment option is available to all our students who are looking for an immersive cultural experience during their studies.

HOW TO APPLY?

1. **Submit Your Application:** When completing your housing request select the apartment capacity (number of students sharing your apartment) and then the room capacity (number of students sharing your bedroom).
2. **Select and request:** Indicate a housemate request (only one preference allowed)
3. **Prepare for Your Stay:** Receive your apartment address and location

BENEFITS OF SHARED APARTMENT ACCOMODATION

LIVING IN A SHARED APARTMENT ALLOWS STUDENTS TO:

- Learn how to manage and share a living space with others
- Understand the dynamics and opinions of different individuals
- Build new relationships outside of their comfort zone
- Experience the apartment lifestyle common to urban city contexts

APARTMENT LIVING LIVING HELPS STUDENTS TO GAIN:

- Independence and familiarity in new surroundings
- Confidence in daily domestic activities to maintain an independent lifestyle such as grocery shopping, cooking, cleaning
- An opportunity to acquire a sense of belonging, identity, and community engagement in connection to one's neighborhood
- Exchange of language, culture, and traditions with locals in the neighborhood
- The experience of living like an Italian, a citizen of Florence
- The opportunity to partake in the local culture of walking to explore Florence

HEAR FROM OUR STUDENTS!

"Living in a shared apartment gave me freedom and amazing new friends!"
Alex, USA

"Best decision ever! Independence, fun, and a real student life experience."
Emma, Australia

"I loved having my own space while still being part of a student community."
Sophia, Canada

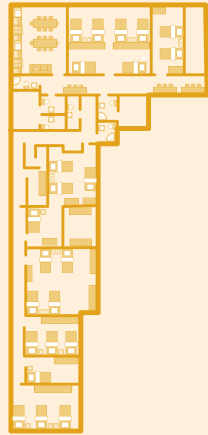

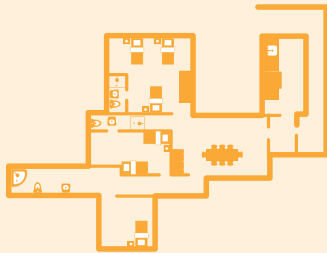
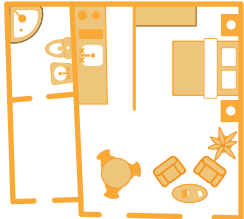
APARTMENT OPTIONS

Students during the housing request process, will have to:

A) SELECT THE APARTMENT CAPACITY > NUMBER OF STUDENT SHARING THE APARTMENT.

Availability of the above options are on a first-come, first-served basis.

When preferences are not available, students will be asked to select another option.

	CAPACITY	DESCRIPTION	EXTRA COST	LAYOUT *
SHARED DORM-STYLE APARTMENT	17+ STUDENTS per Apartment	<p>SHARED DORM-STYLE APARTMENT FOR 17+ STUDENTS.</p> <p>Multiple-occupancy rooms (see “Room Type Options” section.)</p> <p>The apartment will have sufficient kitchen space, common areas, and bathrooms, and will be fully furnished according to the number of assigned residents.</p> <p>The residences are dormitory-style and thus represent a medium to higher-occupancy living arrangement.</p>	NO	
	8-16 STUDENTS per Apartment	<p>SHARED DORM-STYLE APARTMENT FOR 8-16 STUDENTS.</p> <p>Multiple-occupancy rooms (see “Room Type Options” section.)</p> <p>The apartment will have sufficient kitchen space, common areas, and bathrooms, and will be fully furnished according to the number of assigned residents.</p> <p>The residences are dormitory-style and thus represent a medium occupancy living arrangement.</p>	YES	
SHARED APARTMENT	3-7 STUDENTS per Apartment	<p>SHARED APARTMENT FOR 3-7 STUDENTS.</p> <p>Multiple-occupancy rooms (see “Room Type Options” section.)</p> <p>The apartment will have sufficient kitchen space, common areas, and bathrooms, and will be fully furnished according to the number of assigned residents.</p>	YES	
PRIVATE APARTMENT	1 STUDENT per Apartment	<p>STUDIO OR MAX 1-BEDROOM FOR 1 STUDENT.</p> <p>The standard layout of the apartments consists of one sleeping area/bedroom, bathroom, kitchen/ living/dining room space. There is sufficient storage space to accommodate a reasonable amount of clothing and luggage.</p>	YES	

* Please note that this is only an example of the apartment category, assigned layouts will vary.

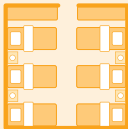






ROOM TYPE OPTIONS

Students during the housing request process, will have to:

B) SELECT THE ROOM TYPE > NUMBER OF STUDENTS SHARING THE BEDROOM.

Room types available upon request according to availability.

Rooms may vary in size, depending on the apartment layout.

	OCCUPANCY	BATHROOM	LAYOUT *	EXTRA COST
MULTIPLE ROOM	4-6 STUDENT	SHARED Use of shared bathrooms in the apartment unit		NO
TRIPLE ROOM	3 STUDENT	PRIVATE BATHROOM Private bathroom for room occupants		YES
		SHARED BATHROOM Use of shared bathrooms in the apartment unit		YES
DOUBLE ROOM	2 STUDENT	PRIVATE BATHROOM Private bathroom for room occupants		YES
		SHARED BATHROOM Use of shared bathrooms in the apartment unit		YES
SINGLE ROOM	1 STUDENT	PRIVATE BATHROOM Private bathroom for room occupants		YES
		SHARED BATHROOM Use of shared bathrooms in the apartment unit		YES

* Please note that this is only an example of the apartment category, assigned layouts will vary.

ROOM TYPE OPTIONS

SINGLE ROOMS

WITH PRIVATE BATHROOM

Choosing a **SINGLE ROOM WITH A PRIVATE BATHROOM** means opting for a private room or a private room within a shared apartment or dorm-style, where you have your own bedroom and bathroom but share common areas with housemates.

OCCUPANCY

1-person room occupancy

BATHROOM

Private

EXTRA COST

This option requires an additional supplement cost



WITH SHARED BATHROOM

Choosing a **SINGLE ROOM WITH A SHARED BATHROOM** means opting for a private room within a shared or dorm-style apartment, where you have your own bedroom but you will share the bathroom with your housemates.

OCCUPANCY

1-person room occupancy

BATHROOM

Shared

EXTRA COST

This option requires an additional supplement cost



(PLEASE NOTE THAT THIS IS ONLY AN EXAMPLE OF THE ROOM TYPE OPTIONS, ASSIGNED ROOMS WILL VARY.)

DOUBLE ROOMS

WITH PRIVATE BATHROOM

Choosing a **DOUBLE ROOM WITH A PRIVATE BATHROOM** means selecting a room within a shared or dorm-style apartment where the maximum occupancy for that particular room is two people. In this setup, you and your roommate will share the apartment with other individuals who occupy separate rooms within the same apartment, but you will have your own bathroom.

OCCUPANCY

2-person room occupancy

BATHROOM

Private

EXTRA COST

This option requires an additional supplement cost



WITH SHARED BATHROOM

Choosing a **DOUBLE ROOM WITH A SHARED BATHROOM** means selecting a room within a shared or dorm-style apartment where the maximum occupancy for that particular room is two people. In this setup, you and your roommate will share the apartment and bathroom with other individuals who occupy separate rooms within the same apartment.

OCCUPANCY

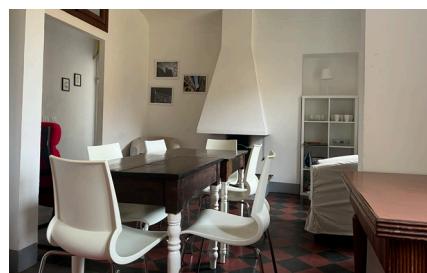
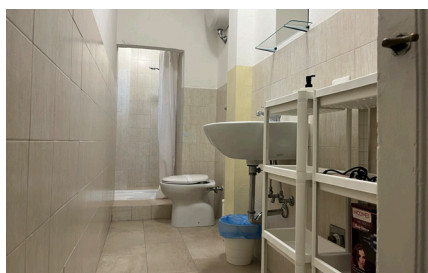
2-person room occupancy

BATHROOM

Shared

EXTRA COST

This option requires an additional supplement cost



(PLEASE NOTE THAT THIS IS ONLY AN EXAMPLE OF THE ROOM TYPE OPTIONS, ASSIGNED ROOMS WILL VARY.)

TRIPLE ROOMS

WITH PRIVATE BATHROOM

Choosing a **TRIPLE ROOM WITH A PRIVATE BATHROOM** means selecting a room within a shared apartment where the maximum occupancy for that particular room is three people. In this setup, you and your roommates will share the apartment with other individuals who occupy separate rooms within the same apartment, but you will have your own bathroom.

OCCUPANCY

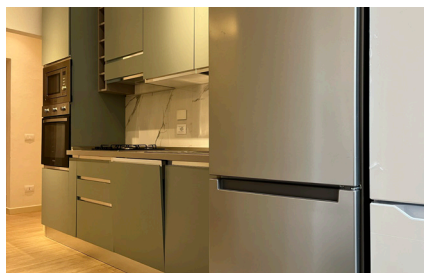
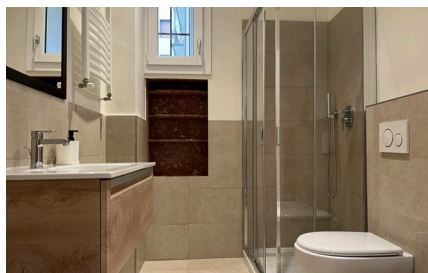
3-person room occupancy

BATHROOM

Private

EXTRA COST

This option requires an additional supplement cost



WITH SHARED BATHROOM

Choosing a **TRIPLE ROOM WITH A SHARED BATHROOM** means selecting a room within a shared or dorm-style apartment where the maximum occupancy for that particular room is three people. In this setup, you and your roommates will share the apartment and bathroom(s) with other individuals who occupy separate rooms within the same apartment.

OCCUPANCY

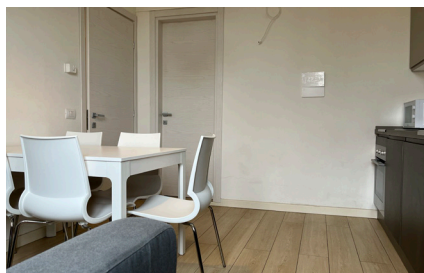
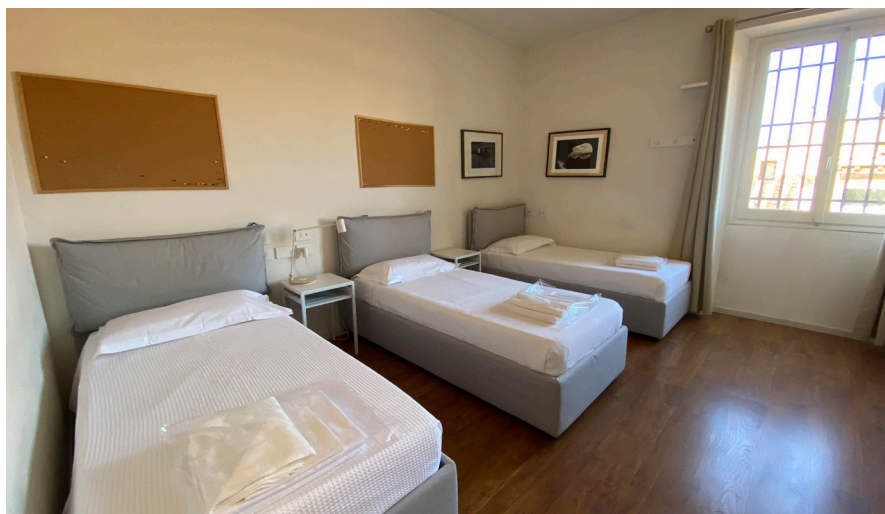
3-person room occupancy

BATHROOM

Shared

EXTRA COST

This option requires an additional supplement cost



(PLEASE NOTE THAT THIS IS ONLY AN EXAMPLE OF THE ROOM TYPE OPTIONS, ASSIGNED ROOMS WILL VARY.)

MULTIPLE ROOMS 4/6

WITH SHARED BATHROOM

Choosing a **MULTIPLE ROOM WITH A SHARED BATHROOM** means selecting a room within a shared or dorm-style apartment where the minimum occupancy is four people and the maximum is six people. In this setup, you and your roommates will share the bathroom(s) with other individuals who occupy separate rooms within the same apartment.

OCCUPANCY

4/6-person room occupancy

BATHROOM

Shared

EXTRA COST

NO



(PLEASE NOTE THAT THIS IS ONLY AN EXAMPLE OF THE ROOM TYPE OPTIONS, ASSIGNED ROOMS WILL VARY.)

.....

CONTACT

For questions and further details please contact our **admissions@auf-florence.org** or your Study Abroad office.

Curious about campus life? See what students are up to!

